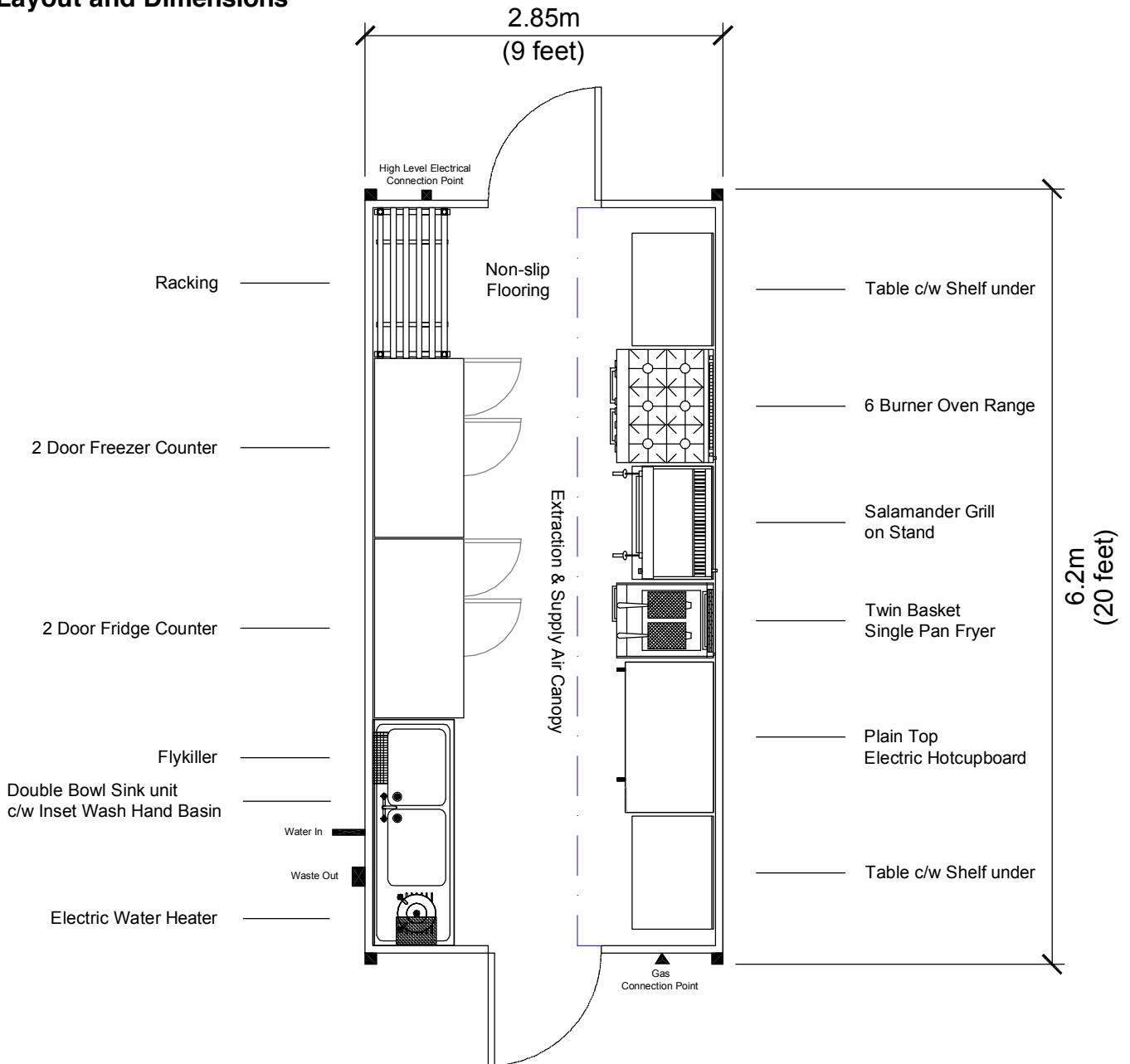


# MK 28/62 MEDIUM KITCHEN



## Layout and Dimensions



SCALE 1:50

## General Description

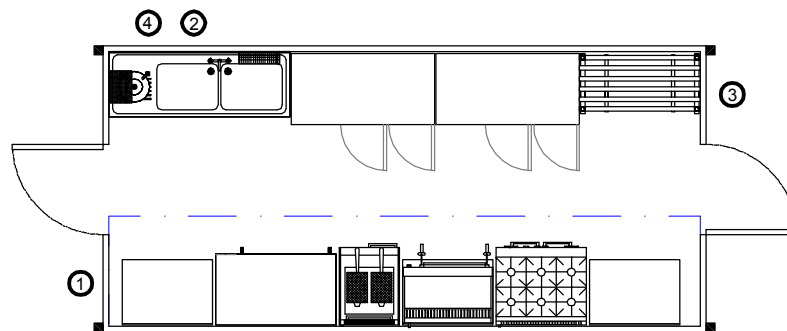
The MK 28/62 is a medium sized production kitchen with sufficient space for up to four chefs to work in comfort. Fitted with a wide range of equipment, this unit is designed to enable the production of a large number of meals per session. However, depending upon your menu and operational requirements the layout can be adapted to meet your specific needs by choosing other items of optional equipment from our hire fleet stock.

# MK 28/62 MEDIUM KITCHEN



## Equipment Specifications - Standard Layout

2 x Stainless Steel Tables c/w Undershef	Stainless Steel Extraction and Supply Air Canopy c/w Interlock and Fire Suppression
6 Burner Oven Range on Lockable Castors	Foodsafe wipe-clean walls and ceiling surfaces
Large Salamander Grill on Mobile Stand or Table	Non-slip safety flooring in either heat-welded vinyl or aluminium dural checker-plate finish
Twin Basket Single Pan Deep Fat Fryer	Hygienic Vapourproof Fluorescent lighting
Electric Plain Top Hotcupboard	Wall-mounted Flykiller
4 Tier Storage Rack	Wall-mounted Soap Dispenser
2 Door 12.5cu.ft. Freezer Counter	Wall-mounted Disposable Towel Dispenser
2 Door 12.5cu.ft. Fridge Counter	
Double Bowl Single Drainer Sink unit c/w Inset Wash Hand Basin and Undershef	
Electric Wall-mounted Water Heater	



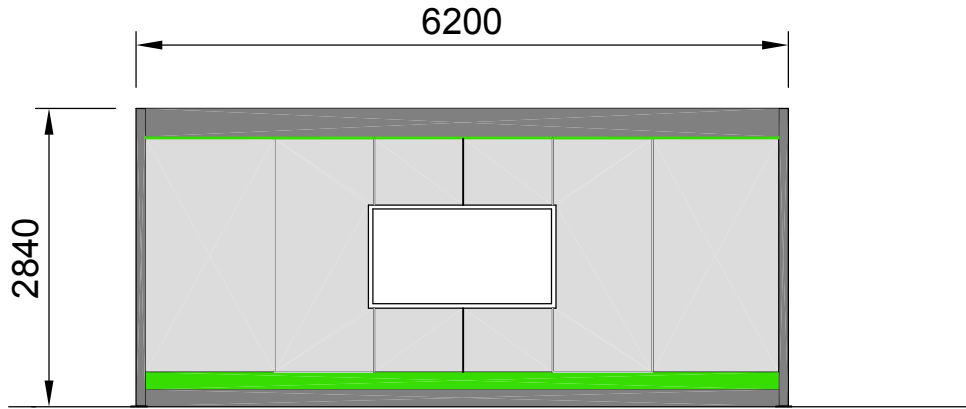
### Technical Specifications

Internal height:	2.3m (7 feet 6½")
External Length:	6.2m (20 feet 4")
External Width:	2.85m (9 feet 4¼")
External Height:	2.84m (9 feet 3¾")
External Height on Lorry:	4.5m (14 feet 9¼")
Weight:	2.75 tonnes (approx.)

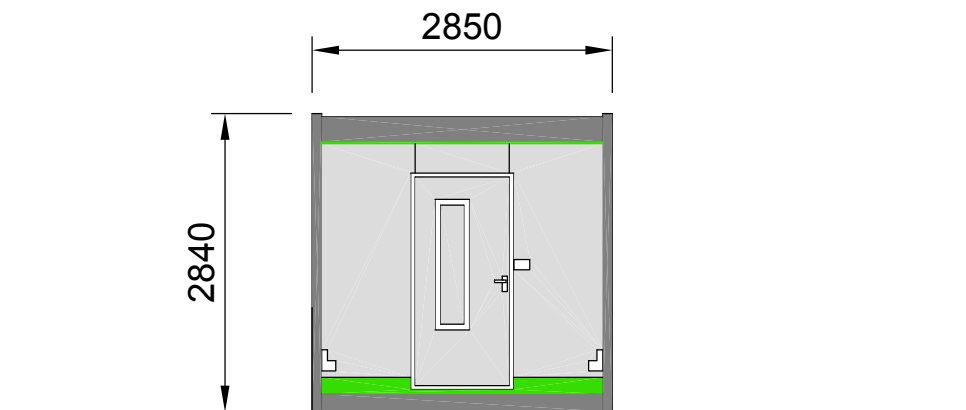
### Services Connections

- ① Gas: ¾" BSP connection to Auto-Changeover Valve for a minimum 2no. 47kg LP Gas Cylinders.
- ② Water: 15mm Cold Water Inlet for connection to Mains supply @ 2 bar minimum pressure.
- ③ Electrics: 63 Amp 230 Volt 1Ø (Single Phase) high level connection via Commando Socket. Amperage rating is for connected load total without allowance for diversity.
- ④ Waste: 40mm (1½") Plastic Waste outlet connection.

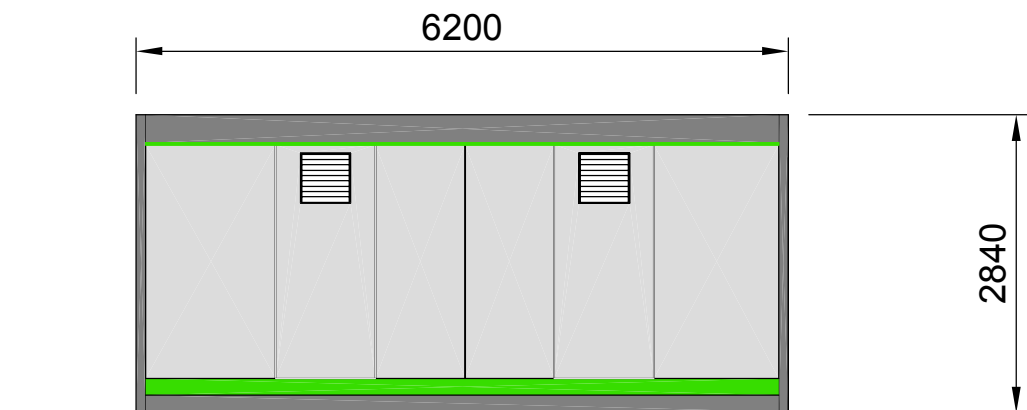
**MK 28/62 MEDIUM KITCHEN**



Prep Side Elevation view



End Elevation view



Cookline Side Elevation view