

## **TEMPORARY CATERING FACILITIES FOR SCHOOLS DURING KITCHEN REFURBISHMENT OR CONTINGENCY**

For any school, a kitchen refurbishment can be a very testing and disruptive time. At Container Kitchen Systems we work to alleviate one major problem: keeping pupils fed throughout the work. We can solve this problem effectively whilst abiding by the ever increasing safety regulations. We can supply temporary catering facilities to suit any size of school. We have supplied kitchen complexes to some of the largest in the country, as well as many much smaller establishments. In every case a Project Manager was assigned to assure the client's needs were met at all times. In emergencies we can react in a matter of days to maintain food service, which is of paramount importance to hungry pupils. We can plan major installations during weekends or holidays, to keep disruption to a minimum. In short our aim is to help you maintain food production with as little fuss as possible. If you think we could help, please call us and we'll be more than happy to come and discuss your requirements.

- **TEMPORARY KITCHENS CAN BE TAILORED TO SUIT ANY TYPE OF CATERING OPERATION, MODULAR OR OPEN PLAN**
- **PRODUCTION KITCHENS, PREP KITCHENS, DISHWASH UNITS, COLDROOMS, PLATE-UP AREAS, STAFF KITCHENS**
- **UNITS CAN LINK TOGETHER TO FORM A COMPLEX THAT FITS THE AREA IN WHICH THEY ARE SITED, AND THE WORK FLOW**
- **FOLDING KITCHENS - REVOLUTIONARY CONCEPT IDEAL FOR AREAS WITH RESTRICTED ACCESS**
- **SINGLE KITCHENS CAN BE OPERATIONAL WITHIN HOURS, COMPLEXES WITHIN A FEW DAYS**
- **ALL UNITS CONFORM TO THE LATEST E.H.O. STANDARDS**

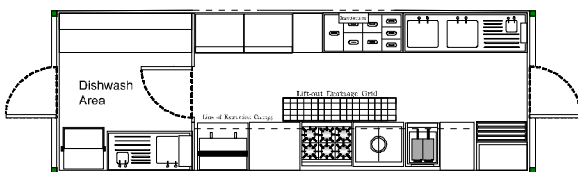
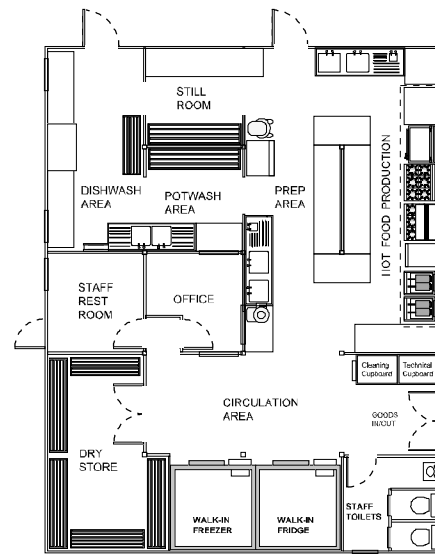
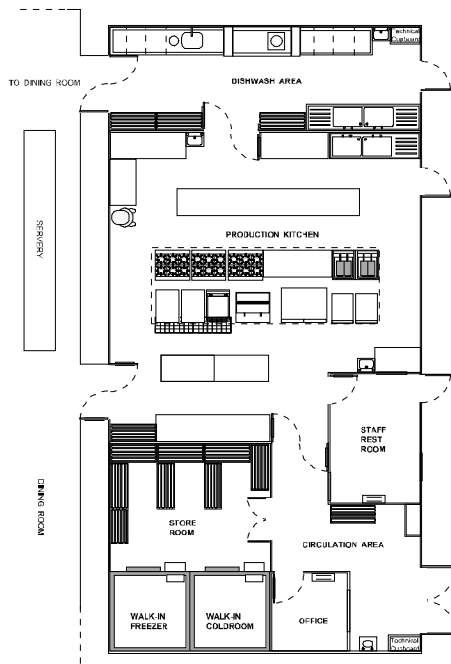
P.T.



# ADVICE WHEN CONSIDERING TEMPORARY CATERING FACILITIES

The site must be accessible by road with any entrances and gateways no less than 3 metres in width. Space to manoeuvre a six wheeled rigid lorry needs to be considered and overhead cables in the vicinity of the installation should be a minimum of 9 metres above ground to clear Hiab lifting gear. If access is restricted, the FoldaKitchen concept should be considered. Grey water from sinks will be connected to mains drainage via 40mm plastic pipe. Power requirement for single cabins is from 32 Amps single phase, larger complexes will require a 3 phase supply. Our engineers can connect to a suitable distribution board. Water connection can be made to any source at mains pressure. Ground should be level and any soft areas made firm by means of purpose-built trackway to support the vehicle and cabin. Linking of units to form a co-ordinated complex and weatherproof access to an existing building can be specified.

## SOME EXAMPLE SCHOOL LAYOUTS



MD 29/86 Mixed Double Kitchen

### Elevations



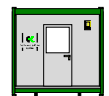
LH END ELEVATION



FRONT ELEVATION



REAR ELEVATION



RH END ELEVATION

## CONTACTING US

Container Kitchen Systems Ltd  
 Henley Park  
 Normandy  
 Guildford  
 Surrey  
 GU3 2BL

Tel: 01483 238 800

Fax: 01483 238 801

Email: [sales@cksltd.co.uk](mailto:sales@cksltd.co.uk)

Website: [www.cksltd.co.uk](http://www.cksltd.co.uk)

## PREVIOUS CUSTOMERS

*Lochinver House School, Potters Bar  
 Godolphin & Latymer School, Hammersmith  
 Sevenoaks School, Kent  
 St. Helen's School, Northwood  
 Our Lady of Compassion, Solihull*

